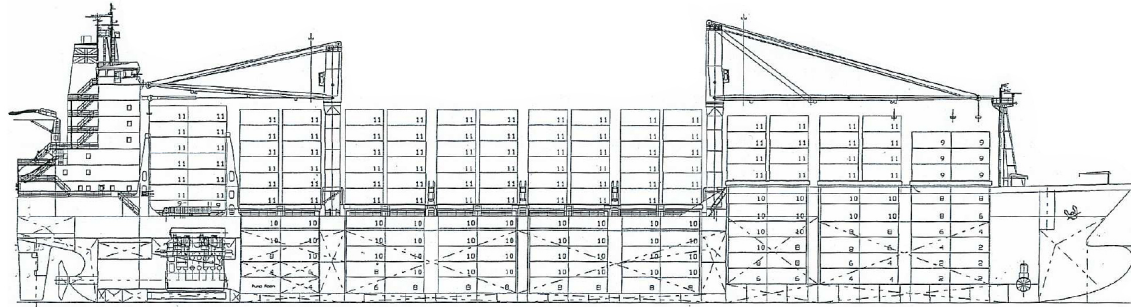




MARFRET DURANDE

1740 TEUS

IMO: 9256365 / Flag: Luxembourg



Guangzhou Wenchong Shipyard (China)
Hull N° GWS 292 - Delivery 2003

MAIN PARTICULARS

- Length over all.....175 m
- Length between pp.....165 m
- Breadth.....27.40 m
- Depth to main deck.....14.30 m
- Scantling Draught.....10.9 m
- Deadweight.....23508 tons
- Service Speed.....20.5 knots
(scantling draught, 90% MCR, 15% power margin)

CLASS

- BV + HULL + MACH, Container Ship, Unrestricted navigation, SOLAS II-2, Reg.54, + SYS-NEQ-1, INWATER SURVEY, + AUT-UMS, ERS.

TANK CAPACITIES (100%)

- Fuel oil.....1502 m³
- Diesel oil (MDO).....668 m³
- Lubricating Oil.....160 m³
- Fresh water.....170 m³
- Ballast water.....7800 m³
- Sludg /dirty oil.....120 m³

TONNAGE

- GT.....18334
- NT.....10744

MAIN ENGINE

- MAN B&W 7 S 60 MC-C (2 strokes)
Total rated power.....15785 kw
(at a rated speed of 105 rpm)
- Bow thruster.....1 x 900 kw

FUEL OIL CONSUMPTION OF MAIN ENGINE

- (based on 20 kn)
- Approximately.....54 MT/day
 - Cruising range.....11300 NM
At 90% MCR with 15% of sea margin

POWER SUPPLY

- Diesel Generators.....3 x 1260 kw

CARGO HATCH COVER

Watertight pontoon type covers

Stack weight:

- At Tank top.....120MT/20ft & 150MT/40ft
- On hatch covers...54 to 70MT/20ft & 90 to 95MT/40ft
- Panel weight.....Max. 34 MT on each panel
(including container loose fittings)

CONTAINER CAPACITIES

With max. number of Containers

- On hatch covers.....890 TEU
- On deck (front of bridge).....150 TEU
- In hold.....700 TEU
- Total.....1740 TEU

- Rows max. in holds/on hatches.....10/11 Rows
- Tiers max. in holds/on hatches.....5/6 Tiers

El. Plugs (for reefer Container)

- On deck.....216 TEU
- In hold.....84 TEU

- Stability (14T/TEU homo.).....1315 TEU
(based on 8ft 6inches, 45% Cont. VCG)

NAVIGATION EQUIPMENT

- 2 - Radar Plant with ARPA
- 1 - Auto Pilot / 2 Gyro compass
- 2 - DGPS navigator
- 2 - speed log
- 1 - ECDIS
- 2 - echo sondeurs